



Natural Bridge Speedway

Official 2021 Rules

Late Model

www.nbspeedway.com

Safety Rules:

1. **Safety is the primary responsibility of the RACER!!**
2. Drivers have a SFI-Approved full fire suit (top and bottom), gloves, and shoes. Full Fire Suit (top and bottom or one-piece) is required (SFI rating optional, but highly recommended).
3. Snell rated SA2010 or SA2015 full-face helmet required.
4. Natural Bridge Speedway recommends the use of a head and neck restraint system, but is not required.
5. All cars must have a fully charged fire 2 lb. extinguisher mounted within reach of the driver. Recommend a 5 lb. halon system.
6. All cars must have a kill switch within easy reach of the driver, and clearly marked “Off” and “On”.
7. All cars must have a quality fuel cell with roll over valve(check valve) in fuel cell vent.
8. Minimum three(3) inch wide, two(2) inch if using head and neck restraint, SFI-Approved five point safety belts, mounted securely to the roll cage. (Recommend belts be no more than three years old.)
9. Any pre-race technical/safety inspection and car or equipment is deemed unsafe by officials will result in not being allowed to compete. Official’s decisions are final!
10. All track specific general safety rules or requirements will apply at all times to all participants(i.e. gloves, door plates, head and neck restraints, etc.) at that track.
11. RaceCeiver one way radios are REQUIRED at every event. Failure to have a RaceCeiver could result in disqualification. Malfunction of such device (i.e. dead battery, ear phone failure, etc.) will not constitute any penalty.
12. NO two-way radios, cell phones, or other communication devices will be allowed. RaceCeiver is the ONLY communication device permitted. Drivers caught with any other communication device will be disqualified for that event (heat or feature). No lighted signal devices(light sticks, flashlights, cell phones, etc.)
13. No mirrors are allowed at any location on the car.
14. ALL weight/lead must be painted and include the car number. Weight must be securely fastened to the car with a minimum two (2) ½” diameter bolts. No weight may be attached to the back bumper. Losing weight in any race will result in disqualification for that event.

Membership and Entry Fees:

1. Anyone entering Natural Bridge Speedway pits must purchase an Annual Membership at a cost of \$30 per year. If not purchased for the year, you will pay \$5.00 addition to regular Pitt entry fee. This membership money goes towards Banquet at end of year to cover cost of Trophies, points money and to give everyone a nice awards Banquet. This money makes the driver eligible for any Natural Bridge Banquet winnings. Speedway will put all membership moneys into a fund for a points Banquet at end of year.

Weekly Race Procedures:

1. Anyone helping roll track when needed for at least 10 laps will get 5 additional points.
2. In the event of rain at the speedway during a scheduled Weekly Racing Series event, and the feature event has not completed more than half (1/2) the advertised laps, that event must be either cancelled completely or made up the next week as a Double Feature. The field will be set as qualified from the previous attempt to race.

Technical Rules and Regulations:

It is the obligation of each participant to ensure their conduct and equipment are in compliance with all applicable rules and procedures, as they may be amended. Any amendment(s) will supersede any previous rules regarding that aspect of competition. An amendment is effective from the date it is added to the official rules regardless of when a competitor receives notice.

Body and Body Modifications

- All cars must have an aftermarket frame.
- Installation of a windshield is optional. You may use Lexan or 4 to 5 half inch thick round steel bars placed directly in front of the driver.
- All cars must have stock appearing fiberglass, aluminum or steel body.
- The following competing models are allowed:
 1. GM - No Corvettes. Intermediate size body styles only.
 2. Ford – Mustang. Probers or any intermediate size body style only.
 3. Chrysler – Any intermediate size body style.
- Spoiler cannot extend past quarter panels. Side supports from spoiler toward deck lid may not exceed 8” in height and/or 18” in length. See end of document for exhibits.
- If you are in doubt about a body style, please ask a Speedway Official for more information.
- Car number must be displayed on roof and doors

Weight

- All cars must weigh a minimum of 2,400 pounds (with the driver) after the race

Chassis, Suspension, and Frame

- 103 inches minimum wheelbase is required.
- All cars must be an offset chassis. UMP chassis rules apply.
- Any manufactures full frame or a stock appearing front frame section attached to a steel rail frame.
- Round tube, square tube and rectangular tube permitted.
- Minimum of 3 door bars on left and right side of the car.
- Roll cage-tubing minimum of 1 ½” diameter, with a wall thickness of 0.095.
- Roll cage must be attached to frame section.
- Any radiator is permitted and must be mounted in the front of the engine.

Carbon fiber components are not permitted. (except driveshaft)
- sway bars, torque arms, etc. are permitted.

- There is a maximum of 3 coil covers permitted on the rear suspension.

Fuel, Fuel Cell, and Fuel Pumps:

- A NASCAR or NHRA approved fuel cell is mandatory and must be contained in a heavy steel box to prevent puncture. Fuel cell may be offset.
- Natural Bridge Speedway racing fuel only, no additives permitted. Natural Bridge Speedway has the right to withdraw fuel and refill with track fuel.
- Electrical fuel pumps are permitted. Electric fuel pumps must be wired into ignition switch.
- If electric, you must have a drag racing style master shut off switch located behind area on left side of your car, behind seat.

Brakes

- Any automotive braking system is permitted.

Rear End

- Any type of rear end is permitted

Tires and Wheels

- All tires must be Hoosier 1325 or 1425 Racing Tires. NO white dots
- Wide 1325 permitted for Right Rear
- No 1325 29/11.0/15 or C4000 11.0/88.0/15.
- Wheels can be a maximum of 14 inches wide.
- No soaking permitted.
- Tire can be confiscated at track discretion

Transmissions and Components

- Any automatic or manual style transmission is permitted.
- Bert or Brinn okay, stock style manufacturer's case must be retained.

All cars must be able to start and stop on its own without assistance. Must be an automatic or have a clutch installed. Any type of clutch is permitted.

- Tail shaft may be removed from any automatic transmission.
- All driveshafts must be white.
- Driveshaft loops are required.
- All cars must have an aftermarket high performance flywheel. No stock flywheels are permitted.

Engine Specifications

Approved Engines:

1. GM-350 / Ford-351, Cleveland or Windsor / Chrysler – 340 or 360. Cast iron only.
 2. Crate Engines are allowed, the following are approved (must have all seals unbroken):
 - a. Ford – M-60007-D3475SR (415 hp) / M-6007-Z351SR (400 hp)
 - b. GM – 602 or 604
 3. 364 Cubic Inches is the maximum Cubic Inch allowed. The engine must pump a maximum of 364 as calculated by the P&G. The engine will be checked by using a cylinder of the technician's choice. There are no tolerances to this rule – anything over 364 inches may result in a disqualification.
- Dry sump is okay.
 - No aluminum or magnesium engine parts internally, except where noted.
 - 604 Crate Engines allowed with 650 or 750 Holley 4 barrel carburetors. No modifications to the carburetor.
 - The engine must be located in the following location:
The #1 spark plug must be a maximum of 6 inches behind the center of the upper ball joint.

Heads:

- All heads must be cast iron or steel.
- Any size valve is allowed in the heads.
- Porting and Polishing on all heads is permitted.
 1. GM – Any cast iron or steel 23 degree head.
 2. Mopar Heads Only or Stock – P500-7445AB, P500-7708AB, P5249769, P5007355, P500-7950
 3. Ford Heads Only or Stock – Roush 180-053030, Roush 53040, n-351-6049, n352-6049, Windsor Jr. 5302. Windsor 2302.

All casting numbers must be visible.

Crankshaft:

- All crankshafts must be either cast iron or steel.

Pistons:

- Any flat top or dome pistons are allowed.
- Pistons can protrude through the top of block by a maximum of .005's. If it protrudes through the top more than .005's it may result in disqualification.

Connecting Rods:

- Any steel connecting rod is allowed.
- No titanium or aluminum connecting rods

Camshaft and Lifters:

- Any hydraulic, solid lift or roller cam is permitted.
- No ceramic lifters or pushrods permitted.

Intake Manifolds:

- Any cast aluminum intakes are allowed. Intake must be store bought. No sheet metal intakes are allowed.
- Port and Polishing is allowed.
- Max adaptor plate height is 2.5".

Carburetor:

- No Predator or Weber Carburetors are allowed.
- The following carburetors are allowed:
 1. Any single 2 barrel carburetor with base plate can be no larger than 1.750. The carburetor must pass the no-go-gauge test.
 2. Any single 4 barrel carburetor up to 750 CFM. (750 CFM carburetors must pass the no-go-gauge test, Venturi size no larger than 1.378 and with a base plate opening no larger than 1.693 in diameters.)

Timing:

- No gear drive timing is permitted.

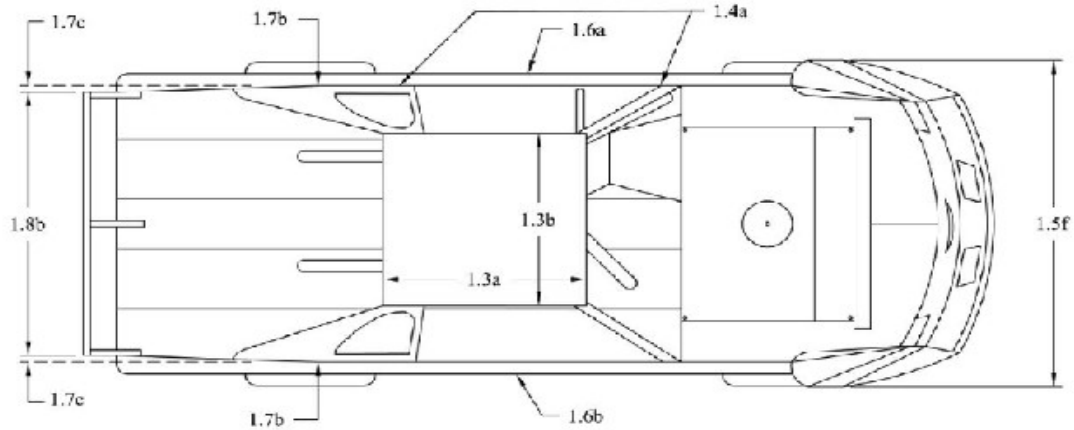
Distributors:

- No magnetos are allowed.
- Any dual point or breakerless is permitted.
- Absolutely no traction control devices of any kind – violation will result in a 150 point penalty.
- Must use a 6ALN MSD Part # 6430, the speedway reserve the right to substitute box before or after race.

Headers and Mufflers:

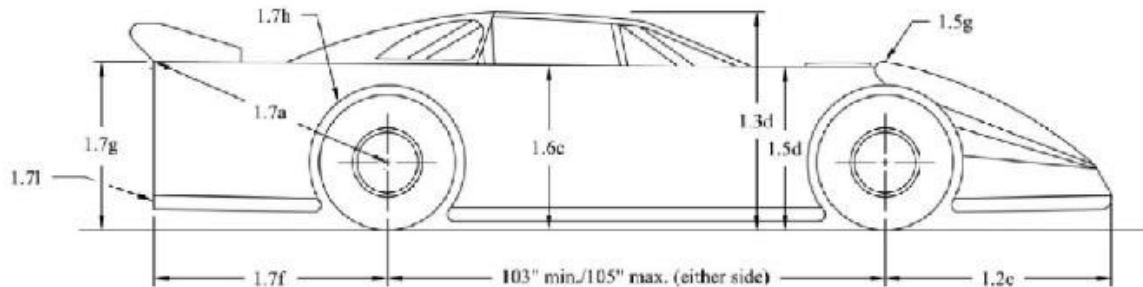
- Exhaust headers are of driver's/car owner's choice.
- Mufflers – Schoenfield # 92535 muffler required. This muffler is 9 inches long with a 3 1/2" inlet and outlet. Schoenfield manufactures all the turn downs, adapters, reducers, enlargers and all hardware.
- Mufflers must be installed so that part number is visible

- 1.3a - Roof length must be a minimum of forty-four inches (44") to a maximum of fifty-four inches (54").
- 1.3b - Roof width must be a minimum of forty-eight inches (48") to a maximum of fifty-two inches (52").
- 1.4a - All roof side panels must extend to edge of decking.
- 1.5f - Front fender flares cannot extend beyond front tire more than one inch (1") in width with the wheels pointed straight.
- 1.6a - Door cannot exceed seventy-six inches (76") in it's entirety at top of door.
- 1.6b - Door cannot exceed eighty-two inches (82") in width at the bottom in the center of car.
- 1.7b - The quarter panels cannot exceed seventy-six inches (76") in width at any point behind the center of the rear hub as measured at the top.
- 1.7c - Rear decks must taper from seventy-six inches (76"), as measured at the top over the rear hubs, uniformly back to seventy-two inches (72)" at the spoiler, equally on both sides.
- 1.8b - Maximum spoiler width is seventy-two inches (72").

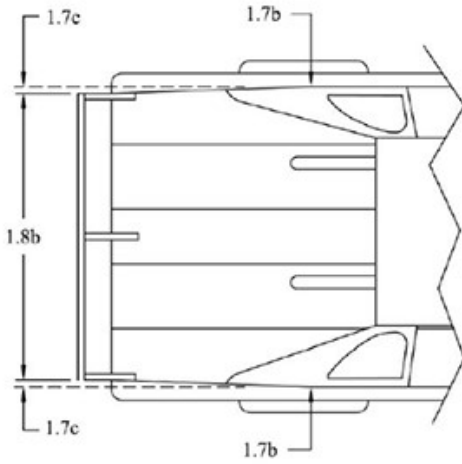


**LATE MODEL
TOP VIEW DIMENSIONS**

- 1.2e - Stock Nosepiece can extend a maximum of fifty-two inches (52") from center of front hub to farthest point extending forward.
- 1.3d - Roof height must be between forty-five (45") and forty-eight inches (48") from the ground.
- 1.5d - Front fenders can not exceed thirty-seven inches (37") in height measured from the ground.
- 1.5g - The front fender flares may not be higher than fenders by more than two inches (2").
- 1.6c - Doors can not exceed thirty-seven inches (37") in height measured from the ground.
- 1.7a - Fifty-three inches (53") maximum center of rear hub to top corner of quarter panel.
- 1.7f - Forty-eight inches (48") maximum length from center of rear hub to end of quarter panel.
- 1.7g - Thirty-eight inches (38") maximum height from top of deck to ground.
- 1.7h - Minimum of two inches (2") tire clearance from body.
- 1.7i - Any skirting can not extend beyond the quarter panel.

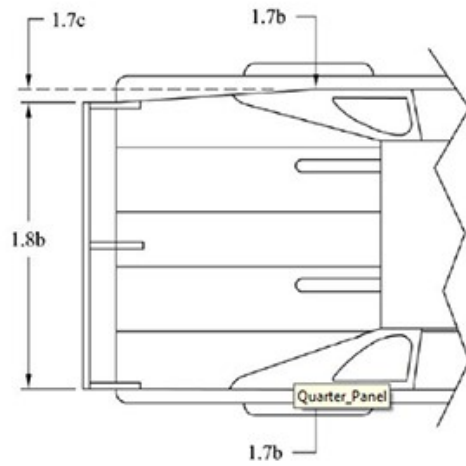


**LATE MODEL
SIDE VIEW DIMENSIONS**



Option 1

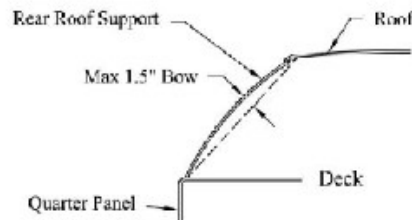
Rear decks must taper from seventy-six inches (76"), as measured at the top over the rear hubs, uniformly back to seventy-two inches (72)" at the spoiler, equally on both sides.



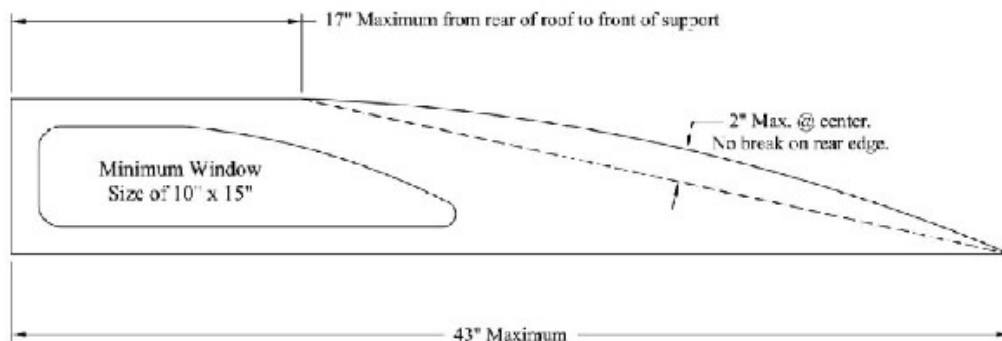
Option 2

Rear decks must taper from seventy-six inches (76"), as measured at the top over the rear hubs, uniformly back to seventy-two inches (72)" at the spoiler, on the left side only.

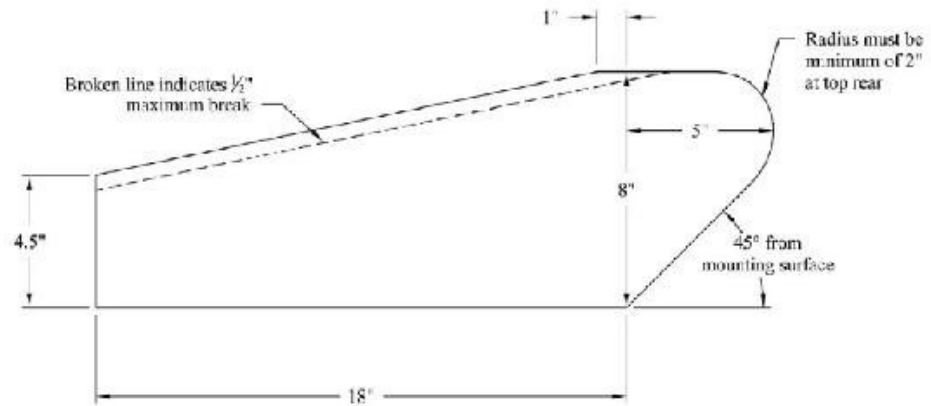
**LATE MODEL REAR
QUARTER PANEL OPTIONS**



REAR VIEW



SIDE VIEW



No more than three (3) spoiler supports permitted. Front edge of supports must be in line.

Dimensions Have Zero Tolerance

**DIRT LATE MODEL
SPOILER SUPPORTS**

Fines, Penalties, and Suspensions:

1. **Pre-Race Technical Violation(s):** Any technical violation(s) discovered during pre-race technical inspection, the driver will be notified of violation(s), and car must be fully in compliance before allowed to compete.
2. All decisions of officials and/or the promoter regarding the application or interpretation of the rules, and the scoring of finishing positions shall be non-litigable. All participants agree that they will not initiate any legal action against Natural Bridge Speedway,
3. By signing the annual membership/registration agreement, participants agree that they will comply with the written rules and procedures of Natural Bridge Speedway. If the participant breaches this membership/registration agreement, he or she will be liable for actual and liquidated damages sustained by Natural Bridge Speedway.

Code of Conduct and Conduct Penalties:

1. Drivers, car owners, and teams are to always conduct themselves in an orderly and professional manner while competing at any Natural Bridge Speedway event. Series director will judge incidents of conduct accordingly and use the following criteria to assess any penalties upon a driver, car owner, or race team as necessary.
2. Driver will be notified of penalties that have been levied by the series director. All series director's decisions are final.
3. Series director may choose to levy monetary fines, suspension from sanctioned events, and deduct points as deemed necessary by the rules infraction or actions taken by a driver at any time. Series and tracks reserve the right to enforce or levy fines, points penalties, require changes, or suspension from competition for any actions deemed detrimental to the sport, series, or track. This includes, but is not limited to, social media posts, and/or derogatory or distasteful statements/slogans/photos/graphics on cars or any other driver related material visible to the public (i.e. helmets or driver's suits, trailer or transporter, etc.).
4. Natural Bridge Speedway will adhere to, and uphold any suspension levied on a driver. If a driver has been suspended or barred from entering the property, that will be upheld by the Track. Series and sanctioned event do not overrule a track's decision to refuse entry to any driver, car owner, or crew member.
5. NOTE: These rules are not intended to eliminate competition or accidental contact. However, they are intended and may be used to penalize deliberate contact and/or over-driving or deemed deliberate acts of aggression towards other drivers.
6. No driver will be allowed to compete/participate while under the influence of any alcoholic beverage or illegal/controlled substances. If a driver is found to be participating in such a manner, that driver will be immediately suspended and removed from competing.
7. Any competitor that verbally abuses a track official by using profane and/or disrespectful language is subject to a fine of \$100 for the first offense. A \$200 fine, one-race suspension, and loss of points for the second offense. After a second offense, driver is subject to 30-day or longer suspension and loss of points as determined by officials.
8. Any physical confrontation, either on the track or in the pit area, will result in the aggressor(s) being suspended for one race minimum, loss of points, and \$300 fine for the first offense. A second offense will result in the driver being suspended for the remainder of the season, and a \$500 fine paid to the speedway before allowed back to competition.
9. Any driver who enters another driver's pit area, or approaches another driver's car on the speedway, will be deemed the aggressor. Away from either driver's pit area, both drivers will be considered aggressors. Drivers should be aware that they are responsible for any member of their race team, and the above penalties will apply to the driver concerned even if the driver is not directly involved.
10. In the event of a felony conviction of a driver, team member, or team sponsor, disciplinary action could be a minimum of a 365-day ban from the series beginning with the date of the conviction or the date of the completion of any incarceration to said conviction, whichever date shall last occur.

- 11. Disciplinary action may also include, but is not limited to, the right of the track organizers and officials to suspend either temporarily, or permanently, any driver, team member or sponsor, whose actions, in the sole opinion and discretion of the track organizers and officials, may have resulted in, or may result in harm or detriment to Natural Bridge Speedway.
- 12. Any incidents occurring during the last five events of the season, may result in penalties being applied to the beginning of the following season.
- 13. Any incident(s) that are judged to be deliberate acts of aggression, whether on or off the track, under green or caution, will result in disqualification and a monetary fine to be determined by track' officials.
- 14. Track officials reserve the right to increase the above penalties, by either adding additional money, suspension time, or points loss, depending on the severity of the incident.
- 15. Track officials reserve the right to revoke a competitor's membership at any time. All official's decisions are final.
- 16. Any threat of, or legal action taken or levied against the Track by a driver/race team, will immediately result in that driver's indefinite suspension from competition in any/all Natural Bridge Speedway events.
- 17. Any disqualification, other than a weight violation, will result in no points and no money for the event. Weight violation will move the driver to the end of the finish order.
- 18. The decisions made and disciplinary actions taken by the Track and officials hereunder shall not be appealed by the driver, team member, or team sponsor affected thereby.
- 19. ALL OFFICIAL'S DECISIONS ARE FINAL.

ATTENTION CAR OWNERS AND DRIVERS:

Please remember that we are here and can race because of the fans, promoters, and sponsors. If they don't benefit, we won't benefit. While we understand that this competition involves substantial financial stakes, there is no excuse for bad or unruly behavior which would tend to bring the track or sponsors into disrepute.

PLEASE NOTE: By entering, qualifying, and/or competing in a Natural Bridge Speedway event, you are accepting these rules and regulations as being those under which you are prepared to race. Any driver entering and competing in a Natural Bridge

Speedway event acknowledges and accepts the following: Natural Bridge Speedway and its assigns may use the drivers names, pictures, likeness, and performance in any way, medium, or material, including without limitation by and through, television, radio, air wave: cable and satellite broadcasts, film productions, videotape reproductions, audiotape reproductions, transmissions over the internet, and public and private on-line services authorized by Natural Bridge Speedway and the like, before, during, and after the event, for promoting, advertising, recording or reporting in the event and do hereby relinquish all rights there to for these purposes, provided however, that the car owner and driver shall retain the exclusive use of its or his/her name, picture and likeness in connection with product endorsements and the sale of products, services, concessions, and merchandise.

Owner:
 Print Name _____ Sign _____ Date _____
 Driver:
 Print Name _____ Sign _____ Date _____

